

THE GREAT SCHUSS

LEXINGTON SKI & SPORTS CLUB/MARCH 2015/JAN CLARK, EDITOR

**March Meeting:
Back to the Racquet Club!
March 3rd**



The next club meeting is Tuesday, March 3rd. We will be meeting back at the Racquet Club Apartments Clubhouse, 3900 Crosby Drive, off Man-O-War Drive. Social hour is at 6:00 pm, meeting at 7:00 pm, as always!

Recently returning skiers from the Keystone and Jackson Hole trips will provide plenty to talk about and pictures to vie! In addition, the slate of officers for the 2015-16 Board will be presented by President-Elect Linda Gorman. Come on by for the social hour and meeting!



LET'S GET SOCIAL!

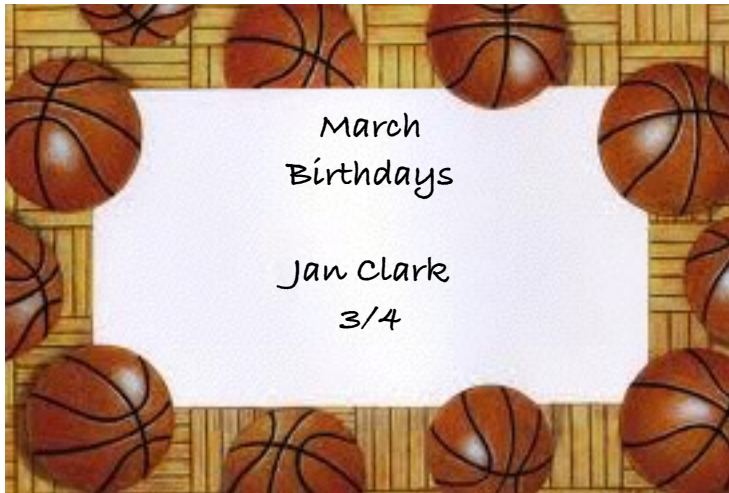
Spend Friday the 13th wining and dining with your LSSC friends. We'll meet at 6:30pm at Palmer's in Lexington Green. Please RSVP to Meetup, or to Social Director Si Morrison by e-mail at: sraftery@gmail.com by Wednesday, March 11th. Si needs to make a reservation so let her know if you are coming.



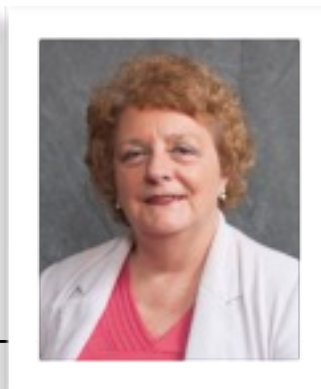
LSSC Officers and Directors 2014-15



The January board meeting will be **WEDNESDAY, March 11h** at 6:30 pm, The meeting will be held at 1880 Ft. Harrods Drive. Turn into Rabbit Run Subdivision at the Harrodsburg Road/Ft. Harrods traffic light between New Circle and Man-O-War. 1880 is at the end of the dead end on Fort Harrods Drive. Members may attend meetings of the board by notifying any board member in advance.



PRESIDENT-JANET GRAHAM JONES
jgjones@uky.edu
PAST PRES/SECRETARY-DAN GEIGER
dangeiger17@gmail.com
PRESIDENT-ELECT-LINDA GORMAN
lsgor0@uky.edu
EXEC VP-HOWARD GLAUERT
hglauert@uky.edu
TREASURER-CHARLIE LISLE
clisle1512@aol.com
SOCIAL-SI MORRISON
sraftery@gmail.com
MEMBERSHIP-CECILE MCKINNEY
cilkyus@yahoo.com
TECH GURU-DAVID MORRISON
davidaaronmorrison@gmail.com
NEWSLETTER-JAN CLARK
janclark@roadrunner.com
RACING-DIANNA MILLER
hagski@aol.com



LSSC website:
www.lexskisports.org

OVSC Racing 2015



JOIN YOUR OVSC SKI BUDS IN WEEK-END FUN! RACE!

CONTACT Dianna Miller, LSSC Race Director at
hagski@aol.com for details and to sign up for the fun!

1/3-4	Mad River
1/10-11	Snow Trails
1/24-25	Paoli
1/31-2/1	Mad River
2/8	PNS King of the Hill
2/14-15	Battle of OH
2/21-22	Paoli
2/28	PNS Super Nastar
3/1	PNS Memorial Race
3/7-8	WV Gov Cup



Executive VP Report

Howard Glauert



Mark your calendar now for **2016!!** Yes, 2015 just started but you have to plan ahead!!

The OVSC Western trips have now been finalized. The January trip will be to Whitefish, Montana, January 16-23, 2016. The second trip will be to Alyeska, Alaska, February 27-March 5, 2016. More details about lodging, pricing, etc. will be coming out in the next few months. The LSSC trips have not been planned yet, so if you have any preferences, please let anyone on the board know. We want your input!



News from the President-Elect

Linda Gorman

Every year the LSSC President-Elect has the responsibility of submitting a slate of officers at the March membership meeting (March 3), for election at the April meeting (April 7). The list of positions is as follows:

President-Elect
Treasurer
Secretary
Executive Vice-President
Membership Chair
Newsletter Editor
Social Vice President
Web Master
Racing Chair



If you are interested in running for any of these offices, please contact Linda Gorman, President-Elect, at lsgorm0@uky.edu by March 2nd. We always welcome new input and new ideas so jump right in!

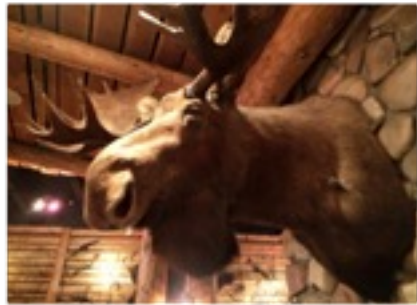


WHISTLER BLACKCOMB
WHISTLER BLACKCOMB



KEYSTONE, CO





Snow Sport Specifics in Brief!!

Miles of interconnecting ski runs - some of the best in the Dolomites - are linked by the cable cars and lifts of Funivie Madonna di Campiglio. Advanced skiers will like the extremely difficult terrain found on certain mountain faces, but there are also many inter-mediate and beginner runs, all accessible from town. There are also plenty of off-piste opportunities.

Campiglio is also part of the greater Skirama Dolomiti Adamello-Brenta area, giving visitors access to eight Alpine ski resorts and over 200 miles of slopes. Spinale ski lifts are located just a few hundred meters from the OVSC Hotel Relais des Alpes (5 minute walk). Heli-skiing is also available.

Madonna di Campiglio was one of the first winter resorts to believe in the future of snow-boarding and to invest in facilities, playing host to the most prestigious international meetings in Trentino.

Madonna has a reputation for its après ski that rivals that for its actual skiing. 'People Watching' begins as soon as the lifts close and many of the resort's more wealthy clientele appear togged up to the nines already to parade in fur coats with dogs that seem smaller than any canine species previously known to mankind.

Pricing is only \$2,657 for all this!
Pricing is not final until ticketing due to fluctuations in currency rates and airline surcharges/taxes.

For more information, contact trip leader Janet Jones at 859.420.5016 or jjones@uky.edu.

MADONNA DI CAMPIGLIO, ITALY

March 7 – 16, 2015



Madonna di Campiglio is an elegant ski resort located at 1550 m of altitude in a natural conch nestled between the **Brenta Dolomites** mountain range and the **Adamello** and **Presanella** glaciers. Today it's one of the most important and well-known Italian ski resorts in the Alps. Its favorable position and mountain atmosphere guarantee optimal ski conditions on slopes that wind from the center of town up to a height of 2600 meters, slopes that cater to all ability levels. The resort boasts 57 ski lifts and 380 km of slopes, 50,000 square meters of snowpark, 40 km of cross country ski trails with four rings at Passo Campo Carlo Magno, and a direct connection to the slopes of **Pinzolo** (which is already connected with Folgarida and Marilleva).

Madonna di Campiglio is known for its social scene, but you don't need to go far to immerse yourself in a panorama of lakes, valleys, streams, shepherd's huts and refuges. The 50,000 hectares of the **Adamello-Brenta Natural Park** and the 450km of mountain trails offer breathtaking views for those who hike or snowshoe through the shade of the indigenous larch and fir tree forests.

What's Included ...

- Airfare Lexington – Milan – Lexington on Delta Airlines
- Ground transportation Milan – Madonna - Milan
- English- speaking guide on the bus
- Seven nights at the four-star Hotel Relais Des Alpes at the resort
- Hot and cold breakfast buffet daily at the hotel
- Six nights dinner at the hotel with choice of traditional and international dishes
- Dinner with wine at the Mountain Rifugio including round trip transfer by snowcat
- Welcome wine and cheese reception with resort orientation
- Use of wellness / spa facility at the hotel
- One night at four star ATA Executive Hotel in Milan
- Breakfast at the hotel
- Fuel charges / air taxes / local taxes / luggage handling tips
- Local guide assistance
- Many optional day tours
- Optional post-trip extension to Ireland and Scotland
- Optional pre-trip extension to Cortina d'Ampezzo



Details



Just some of the Winter Activities available.....

- Ski and Snowboard
- Ice skating
- Heli-skiing and boarding
- Ice Climbing
- Cross-country skiing
- Nordic walking
- Paragliding and hang-gliding
- Dog sledding
- Ski Mountaineering
- Excursions and Snowshoeing
- Swimming
- Snow tubing
- Winter hiking

Madonna Ski Area

- 3630 ft Max Vertical
- 8580 ft Highest Lift
- 5115 Resort Altitude
- 4950 Lowest Piste

Features of Dolomiti Adamello-Brenta Ski Area

- 380 km (200+ miles) of pistes
- 1 skipass
- 100 slopes (45 blue, 37 red, 18 black)
- 5 snowboard parks
- 61 lifts
- 95% programmed snow

Highlights

DoloMitica Run: the longest and greatest descent (5,750m long, with a total slope of 1,248m)

DoloMitica Run: steepest downhill with a maximum slope over 70%

Schumacher Streif: the last part of Spinale Direttissima ski run, with a maximum slope of 70%

Ursus Snow Park: one of the top 5 snowboard park in the Alps

Pinzolo-Campiglio Express: the gondola lift with the best panoramic view

Canalone Miramonti: night skiing

Dolomiti Express: a "train in the Dolomites" to reach the ski lifts of Val di Sole, and therefore Madonna di Campiglio and Pinzolo

Of Special Interest – TOP Piste in Madonna - 3Tre – Canalone Miramonti

One of the most famous slopes in the entire world, where Alberto Tomba and Giorgio Rocca scored some of their greatest successes. Approximately 2.700 meters long, a winding track with numerous extremely fun and dynamic curves. After skiing down through the sparse trees of the first part of the slope which has a medium difficulty level, but allows you to admire a magnificent view of the Brenta Dolomites, skiers will enter into the Canalone Miramonti, the most technical and difficult part of the slope. The finish area of the slope is located within the town of Madonna di Campiglio: an additional bonus for those that decide to try the thrill and excitement that this slope provides. A maximum gradient of 40%, for a slope that is a skiing legend. A state of the art snowmaking system guarantees that the slope is completely prepared and groomed.

MADONNA DI CAMPIGLIO SIGHTSEEING EXCURSIONS

Actual Days of Operation to Be Scheduled



FULL DAY TOUR TO TRENTO

Leave your hotel in Madonna di Campiglio at 09.00am and board the coach for your excursion to Trento (approximately 2 hours of driving, according to road conditions).

Upon arrival, meet the local guide and start your visit of the city. Trento is set in a wide glacial valley, surrounded by vineyards and apple orchards. This city had a very important role in the Medieval Ages, as you may have heard about Council of Trent, one of the most important events of the history of the Church...Walk along the streets and have a view of Piazza del Duomo, so that you can experience the Medieval taste of the city, but at the same time do not forget about having a piece of famous apple strudel!

After some free time for lunch, enjoy a visit of Buonconsiglio Castle, once the property of Principi Vescovi Castle and nowadays one of the most fascinating examples of this kind of architecture in northern Italy.

Later board the bus for a visit to a winery including wine tasting and some snacks.
Return to the hotel at about 6 PM



FULL DAY TOUR TO THUN CASTLE AND ST. ROMEDIO

Leave your hotel in Madonna di Campiglio at 09.00am and board the coach for an excursion to Thun (approximately 1.5 hours of driving, according to road conditions).

Thun Castle is situated on a strategic spot which offers a wonderful view of Val di Non . The Castle was the house of one of the most important feudal families in Northern Italy, while now it is property of Trento Province.

After your visit, have some free time for lunch and then transfer (approximately 45 minutes driving) to St. Romedio Sanctuary. This is one of most characteristic examples of Christian faith in Europe. It is built on a 70-metre high calcareous rock.. This architectonic building is surrounded by a wonderful natural landscape and it is composed of several churches and chapels directly on the rock. The whole structure is connected by a steep stairway with 131 steps. The oldest chapel of the building dates back to the 11th century and over the centuries other three little churches and other two chapels have been built.

At 4.00pm you will board your coach and transfer back to your hotel.



FULL DAY TOUR TO SAN MICHELE ALL'ADIGE

Leave your hotel in Madonna di Campiglio at 09.00am and board the coach for your excursion to Mezzacorona and San Michele all'Adige(approximately 1.5/2 hours of driving, according to road conditions). Upon your arrival in San Michele all'Adige there will be some free time to visit the town on your own and to find a nice café for lunch. San Michele is famous for its tradition, and you could spend some free time to visit the Museum of Uses and Customs of Trentino People. (entrance fee is not included).

After lunch meet the guide and board the bus for a transfer to a winery for wine tasting.

At 4.00pm maximum board your coach again and transfer back to your hotel

To pay a deposit for the Europe trip online, use the link below:

<http://www.lexskisports.org/2015-international-trip>



THE HOTEL



Great central location

Wellness area with heated pool and two hot tubs

Bar with piano bar

Large relaxing lobby lounge

Just 200 yards from the lifts

Shuttle accessible

Full service spa

Wireless internet in public areas

Onsite restaurant

Minibar and safe in each room

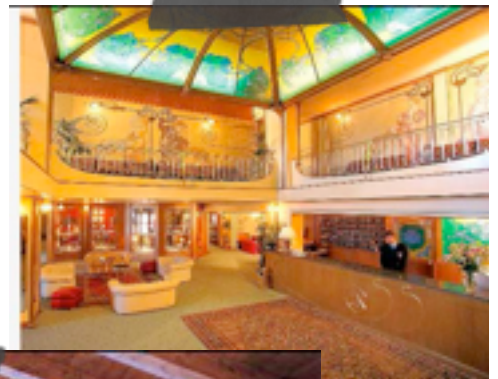
In-room internet for surcharge

LCD TVs in each room

103 guest rooms



The Hotel Relais des Alpes



Ireland & Scotland with LSSC and OVSC

March 16-26, 2015

Tour all the main areas of interest in Ireland and Scotland with your LSSC and OVSC friends in March. A busy itinerary is planned to see all the sights – even St. Patrick's Day in Limerick!

What's Included ...

- Air between Milan and Dublin on Aer Lingus
- Transfer between Dublin Airport and Limerick in private motor-coach with Driver/guide

- Stop at the **National Gardens** en route to **Limerick**
- 4 nights accommodations in Limerick at the 4 star **George Boutique Hotel** in city center

- Breakfast buffet daily at the George
- Half-day city tour of **Limerick** with guide
- Entrance to **St. John's Castle**
- Full day tour to **Killarney** and **Ring of Kerry**
- **Medieval banquet** at **Bunratty Castle** including transfers
- **St. Patrick's Day activities** in Limerick.

- Full day tour to the **Cliffs of Moher**
- Transfer between Limerick and Dublin
- Visits of **Kilkenny** and the **Rock of Cashel** during the transfer to Dublin.
- 3 nights accommodations in **Dublin** at the **Gibson Hotel**
- Breakfast buffet daily at the hotel

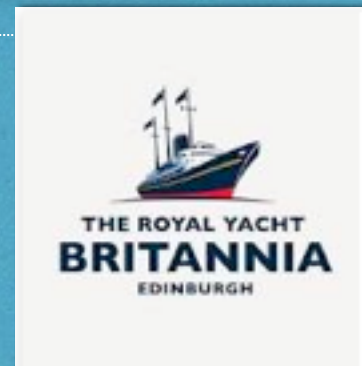
- Half-day city tour of **Dublin** including **St. Patrick's Cathedral** and **Trinity College**

- Full day tour from Dublin to **Boyne Valley** with visits to the **Bru na Boinne Visitors Center** and **Trim Castle**

- Transfer between Dublin Hotel and Airport for flight to Edinburgh.
- Air between Dublin and Edinburgh on Aer Lingus
- Transfer between Edinburgh Airport and hotel in private coach with guide
- Full day tour of **Edinburgh** including entrance **Edinburgh Castle** and visit to **Royal Yacht Britannia**

- Three nights accommodations in Edinburgh at the 4 star **Novotel City Center Hotel**

- Breakfast buffet daily at the hotel
- All local taxes
- United Kingdom Departure tax
- Luggage handling tips

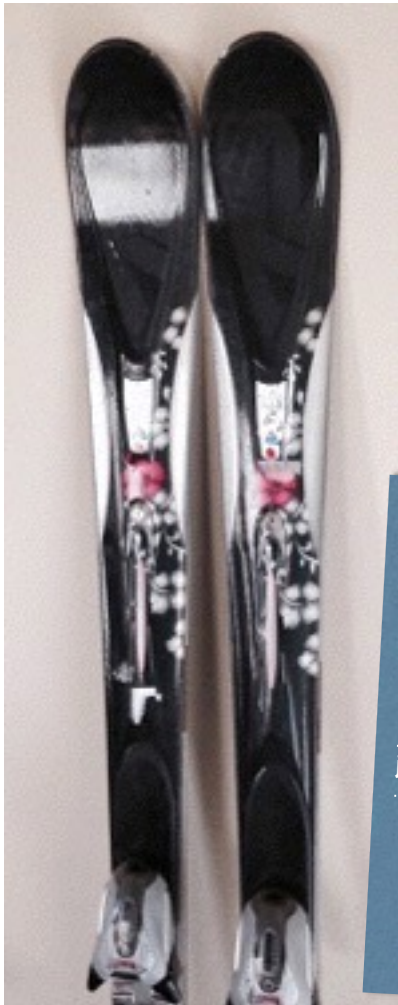


FROM THE TRIP LEADER:

Pricing is only \$2,075 for all this when booked with the Madonna trip! Remember that pricing is not final until ticketing due to fluctuations in currency rates and airline surcharges/taxes. Ireland/Scotland only available. For more information, contact trip leader Janet Jones at 859.420.5016 or jjones@uky.edu.



LSSC Trading Post:
Ski Gear Available
from Club Skiers



K2 Ladies Skis 163cm
 Marker Bindings
 "One Love"
 Contact Jan Clark
 859-533-9571
 janclark@roadrunner.com



BOOTS 4 SALE

Contact Dan Geiger
 859-797-4212
dangeiger17@gmail.com



LADIES HELMETS: BOERI & GIRO



Boeri helmet, Small, Black and silver herringbone design.

Contact Jan Clark



GOGGLES, TOO!
 and a pair of
Scott poles!
**(REALLY? You need
 a picture of poles?)**

Contact Jan Clark



Giro helmet, Small, Solid black, padded helmet bag included.

Contact Jan Clark