

THE GREAT SCHUSS

LEXINGTON SKI & SPORTS CLUB



Newsletter: August, 2021

August Club Meeting:

August 3, 2021

IN PERSON!!

PLACE: ROOSTERS

124 Marketplace Dr. Lexington

(off Man of War, just west of Nicholasville rd.)

Social Hour: 6:00 p.m.

Food, beer and wine are available for purchase.

Meeting starts at 7:00 p.m.

**2021-2022 TRIP REVIEW & SIGN-
UP!!!**



SPECIAL MESSAGE FROM THE BOARD



THINK TRAVEL!



*** THINK SNOW! ❄️**

*** We're elated to be resuming our monthly meetings LIVE!**



*** Same place, same time as before we shut ourselves in.**



*** We have great trips scheduled, so come join us**



*** Catch up with our members**



*** Sign up for trips (only \$100 deposit needed in August)**



*** Renew your membership**

NEWS FROM THE EXECUTIVE VICE PRESIDENT

TRIP INFORMATION FOR 2021-2022!!

SALT LAKE CITY, UTAH

DECEMBER 27, 2021

TO JANUARY 2, 2022



**BEAVER CREEK, CO JAN 22
TO 29**

(EPIC PASS)

OYSC SPONSORED

TRIP

BANFF, CANADA

FEB 19 TO 26

(IKON PASS)





ANDORRA & BARCELONA

MARCH 4 -12, 2022



PORTUGAL EXTENSION

MARCH 12 – 20, 2022

SALT LAKE CITY, UTAH

DECEMBER 27, 2021-

JANUARY 2, 2022

LEXINGTON SKI AND SPORTS CLUB NEW YEAR'S SKI-SNOWBOARD TRIP 2021- 2022

**\$1380.00pp - double occupancy
(PAYPAL \$ 1425.00)**

LAND ONLY - airfare TBA

ENJOY A SKI TRIP OVER THE NEW YEAR'S HOLIDAY!!

Salt Lake City (SLC) has been a favorite destination for the LSSC due to the many (14) and varied ski resorts offering all levels of ski ability and within an hour+ drive of downtown SLC!! What better way to celebrate the New Year than in a winter wonderland with fellow ski – snowboard friends? Based on the very popular 2017 experience, the club is offering the trip again.



Standard Package Includes:

- Lodging (6 nights at Crystal Inn)
- Lift Ticket (SLC Super Pass – 5 of 14 days)
- Alamo Rental Cars (Standard SUV with Ski Racks)

LODGING

Crystal Inn Hotel and Suites
230 West 500 South
Salt Lake City, UT 84101-2309
800-366-4466

- 2 Queen Bed Studio Suites (King available on request)
- 2 Guests per Unit
- Full Breakfast

Amenities

- Microwave
- Refrigerator
- Gym/Fitness center
- Indoor Pool – Hot Tub
- Free Internet Access

FOR NON-SKIERS The hotel is just one mile from Historic Temple Square. Enjoy the unlimited shopping you'll find at the City Creek Center, the Gateway and Trolley Square mall. Explore your ancestry at the world's largest genealogical center, the Family History Library.

TRANSPORTATION

Alamo Rental Car – Standard SUV with ski racks picked up at SLC airport. **One car per 5 participants**

AIR

Air transportation is being finalized - TBA

Payment Schedule

	CASH-CHECK	PAYPAL
August	\$100.00	\$100.00
September	\$430.00	\$445.00
October	\$430.00	\$445.00
November	\$420.00	\$435.00
Total	\$1380.00	\$1425.00

Lift Tickets

Adult 13 & up	
*5 of 14 Days	\$565.00
4 of 14 Days	\$472.00
3 OF 14 Days	\$354.00

* SLC Super Pass (valid at Alta, Brighton, Solitude and Snowbird)

*Included in Standard Package

Ski Areas

There are multiple ski areas near Salt Lake City (14) including:

- ✓ Alta
- ✓ Snowbird
- ✓ Solitude
- ✓ Park City
- ✓ Powder Mountain
- ✓ Snowbasin
- ✓ Brighton
- ✓ Deer Valley

Sign-up at <https://www.lexskisports.org/trips> or at one of our club meetings.

For Information contact: Annette Riehle at newsletter@lexskiSPORTS.org

BEAVER CREEK, COLORADO

January 22, 2022 – January 29, 2022 (Saturday – Saturday)

Standard Package:

\$2105.00 (PAYPAL \$2170.00)

Per person, double occupancy



- Located in Avon, Colorado (approximately 2.5 west of Denver; 20 minutes west of Vail)
- 1,832 acres of skiable terrain
- 23 lifts / 150 trails
- Base Elevation: 8,100 feet / Summit Elevation: 11,440 feet

OVSC Sponsored Trip Includes:

- **Lodging**
- Welcome Reception
- Mountain Picnic
- Farewell Cocktail Party
- Credential / Lanyard

Lodging



7 Nights at the Charter Condominiums (Ski In / Ski Out) at Beaver Creek

Features:

- 2 Bedroom – 2 Bath units (4 per unit)
- 2 restaurants
- An indoor saltwater lap pool / 3 saltwater hot tubs
- A fitness center with weights and cardio machines
- A game room with air hockey and pool tables, foosball, arcade games
- On-site equipment rentals
- All residences have cable and high-speed WiFi

Package Includes:

- RT airfare from Cincinnati to Denver
- 7 days / 6 nights lodging at The Charter Condominiums
- All current air and lodging taxes
- All Day 5 day lift ticket to Beaver Creek / Vail (Optional)
- Shuttle from Denver to Beaver Creek on a chartered bus (including a grocery stop)

Flight Details – United Airlines:

UA 5405 22JAN CVG / DEN 9:10AM - 10:15AM
UA 5901 29JAN DEN / CVG 5:35PM - 10:11PM

Payment Schedule

	CASH - CHECK	PAYPAL
August	\$100.00	\$100.00
September	\$505.00	\$520.00
October	\$505.00	\$520.00
November	\$505.00	\$520.00
December	\$490.00	\$510.00
Total	\$2105.00	\$2170.00

An Epic Pass can be used in lieu of a lift ticket.

2022 Epic passes can be purchased from Winter Ski and Sport at [EPIC PASS ORDER Winter Ski and Sport \(winterskiandsport.com\)](https://www.winterskiandsport.com)

Sign-up at <https://www.lexskisports.org/trips> or at one of our club meetings.

Contact: Roman L. Puchovsky (859-455-6274)

rpuchovsky@lexingtonpolice.ky.gov

puchovskyr@yahoo.com



2022 LEXINGTON SKI AND SPORTS CLUB\OVSC BANFF TRIP

- Lodging at Ptarmigan Inn-7 nights
- Airfare from Lex to Calgary with RT shuttle to the inn
- Lift tickets good at Ski Big 3, Banff Sunshine, Lake Louise and Mt. Norquay
- Club dues of \$40 and trip deposit must be paid to hold your spot for this trip
- Registration Deadline November 6th
- Estimated costs for standard package based on 20+ participants and double occupancy in “hotel style” room
- Daily breakfast included

PAYMENT SCHEDULE

	Cash	Paypal
August 4th sign up	\$100	\$100
October 6 th meeting	\$600	\$618
November 3 meeting	\$600	\$618
December 1st	\$549	\$569
(Estimated cost based on standard package)		

No lift ticket, deduct \$415 from final payment (includes those buying Ikon pass from trip vendor)
 No airfare, deduct \$545 from final payment
 No ground transport to/from inn, deduct \$60
 Lift ticket price for senior 65+ pay \$325, can deduct \$90 from final payment

Canada is back!!

Feb 19 2022
to
Feb 26 2022

Standard Package
\$1,849 cash

Per person, double occupancy

Includes 5 day adult lift ticket

Lodging, Airfare from Lexington and roundtrip transfers from Calgary Airport and OVSC group activities

Optional lift days available

Purchase an Ikon pass as part of the package and receive a discount!

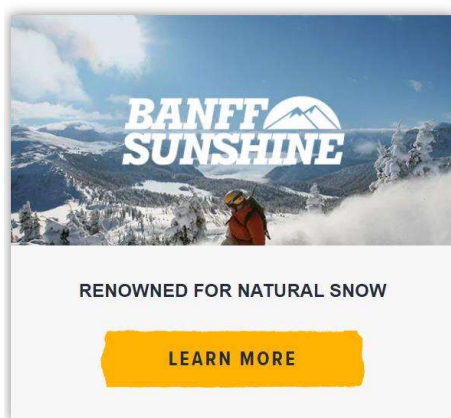
Banff, Ski Big 3 2022 trip.

Join us on Lexington ski club's adventure to the powdery slopes of Ski Big 3; Banff, Lake Louise, and Mt. Norquay in Alberta Canada

Participation requires a valid passport and travel documents for Covid as required at both Canada and US immigration. Status of border opening with Canada is to open by end of August 2021.

(Subject to govt approval)

3 SKI RESORTS - 2 TOWNS - 1 NATIONAL PARK



Ski Big 3 resorts are Banff Sunshine a ski paradise for natural snow lovers, Mt. Norquay a family favorite and for the more challenging terrain, Lake Louise.

Sign-up at <https://www.lexskisports.org/trips> or at one of our club meetings.

For inquiries, please email Tom O'Donnell at localactivity@lexskisports.org , or call/text 1-425-443-4725.

Standard package includes:

RT airfare from Lexington to Calgary AL

7 nights at the Ptarmigan Inn in Banff AL

Transfers to hotel and all OVSC activities

Airfare info:

American Airlines

Depart Lexington KY 2/19/22 6:20am, boarding around 5:45

Arrive Calgary AB 1:53 pm

Depart Calgary AB 2:33 pm 2/26/22

Return Lexington KY 11:37pm

Andorra, skiing in a unique country

Considered to be a worldwide benchmark destination for snow and mountain paradises, where you will find the most seductive ski areas in southern Europe: Grandvalira, Ordino Arcalis and Vallnord - Pal Arinsal offer you more than 300 kilometres of slopes.

Andorra is an independent country located in southern Europe, in the Pyrenean mountain range between France and Spain. This location ensures cold winters with lots of snow, as well as mild summer temperatures, characteristics that make Andorra an ideal destination year round, a country with a territory of 468Km², where 90% is nature.

In the Principality, there is a great variety of cultural, recreational and sports selections, which makes it a perfect destination for snow sport lovers.

The snow excellence

Andorra's location makes it a unique place for practicing ski. Mountains with spectacular slopes, a strategic geographical location, a substantial investment in technology in recent years and a firm commitment to this sport in all sectors of the economy, makes the country stand at the forefront of the leisure and snow category. Typically the season starts at the beginning of December, and it lasts until mid-April. Offering a total of approximately of 150 skiing days, intense snowfalls and a high percentage of sunny days.

Andorra has been a snow destination for over half a century. The first ski lift was installed in the Pas de la Casa area in 1957. This engine was the pioneer and marked the beginning of a story that continues to evolve. Nowadays there are more than 300 km of tracks between the two valleys' ski zones, all in an incomparable setting that perfectly combines nature with urban life. Andorra took advantage of these factors and has balanced them well to become a top tourist destination. This growth is possible thanks to the investments that ski resort's managerial teams have made over the years.

More than 50 years ago, the journey began, installing the first ski lift. Since then, the snow-capped mountains, spectacular landscapes, more than 300 km of slopes, mild temperatures and numerous sunny days have been the reasons why thousands of people have chosen and continue to choose Andorra.

Today Andorra is proud of the modernization of the resort facilities: Grandvalira, Ordino Arcalis and Vallnord – Pal Arinsal offer, including the experience and know-how of their professionals, guaranteed snow in more than 60% of the ski areas, excellent skiing and snow-boarding schools, a wide range of activities, as well as a variety of contemporary gastronomic selections.

Andorra makes snow fun for everyone providing everything they can to skiers.

ANDORRA and BARCELONA, SPAIN March 4 – 12, 2022

Andorra is a tiny, independent principality situated between France and Spain in the Pyrenees mountains. It's known for its ski resorts and a tax-haven status that encourages duty-free shopping. Capital Andorra la Vella has boutiques and jewelers on Meritxell Avenue and several shopping centers. The old quarter, Barri Antic, houses Romanesque Santa Coloma Church, with a circular bell tower. Andorra has been a premier ski destination for many years with its state of the art lift system and incredible terrain on the huge resorts of Grand Valira and Pal Arinsal/ValNord. Grand Valira being the largest and closest to the town of Andorra.

The Snowboard and Freestyle World Championships 2017 were hosted here in March.

What's Included ...

- Air Transportation between Lexington and Barcelona, Spain
- Transfers between Barcelona Airport and Andorra by private coach.
- 5 nights accommodations at the 4 Star Acta Art Hotel
- Welcome Drink and resort orientation evening of arrival.
- Full hot and cold breakfast daily at all hotels
- 3 or 4-course dinner each evening in Andorra
- Private ski bus to the Andorra ski areas for 4 days.
- Farewell drink evening before departure
- Transfer between Andorra and Barcelona Hotel via private coach
- 2 nights accommodations at the 4 Star Avenida Palace Hotel
- Breakfast buffet daily in Barcelona
- Transfer between Barcelona hotel and Airport by private coach.
- All transfers including English speaking assistant.
- All local taxes
- All current airline taxes and fuel surcharges. (Subject to change)



Pricing is only **\$2,495** for all this! Remember that pricing is not final until ticketing due to fluctuations in currency rates and airline surcharges/taxes.

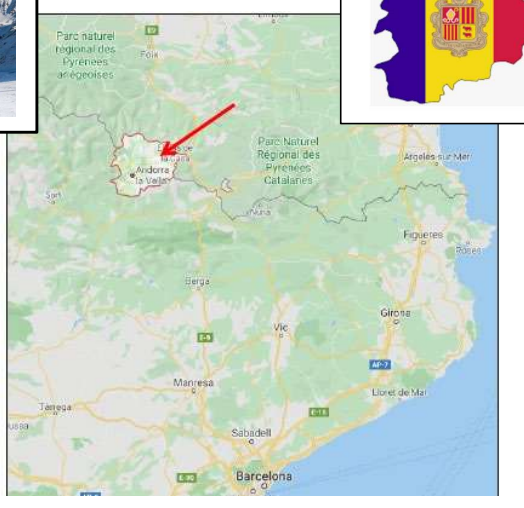
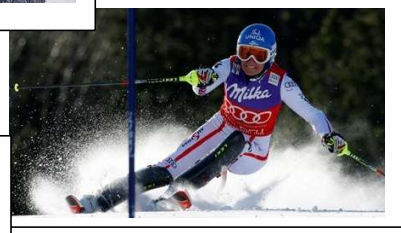
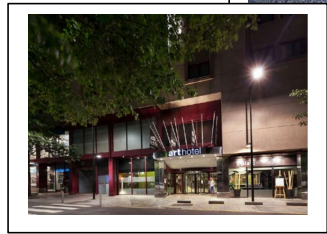
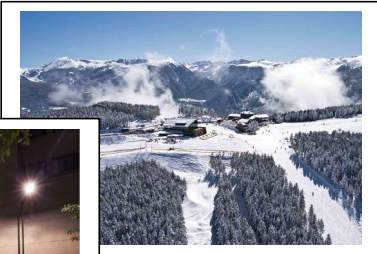
Details.....

Just some of the Winter Activities available.....

- Ski and Snowboard
- Heli-skiing and boarding
- Cross-country skiing
- Ski Mountaineering
- Excursions and Snowshoeing
- Snowbiking and skibiking
- Winter hiking

Andorra Ski Resorts

- **Grandvalira** - 128 runs, 62 lifts
 - Elevation – 9259 feet
 - Vertical drop – 3051 feet
 - Base – 6365 feet
 - 130 mi pistes (16% green, 38% blue, 30% red, 17% black)
 - 128 runs
 - 3 terrain parks
 - 4759 acres of skiable terrain
 - 78.3 mi (15%) snowmaking
 - Uplift of 100,000+ per hour
- **Vallnord / Arcalis** -27 runs, 15 lifts
 - Elevation – 8612 feet
 - Vertical drop – 2280 feet
 - Base – 6365 feet
 - 130 mi pistes (33% green, 22% blue, 37% red, 7% black)
 - 27 runs, 18.6 mi, longest 5 mi
 - 1 terrain park
 - 1092 acres of skiable terrain
 - 9.3 mi snowmaking
 - 15,000 m snowboarding park
- **Vallnord / Pal Arinsal** – 42 runs, 30 lifts
 - Elevation – 8399 feet
 - Vertical drop – 3314 feet
 - Base – 5085 feet
 - 130 mi pistes (17% green, 36% blue, 37% red, 10% black)
 - 42 runs, 39.1 mi pistes
 - 1 terrain park
 - 1747 acres of skiable terrain



XGRANDVALIRA
ANDORRA



Pricing is only \$2,495 for all this! Remember that pricing is not final until ticketing due to fluctuations in currency rates and airline surcharges /taxes. Contact trip leader Janet Graham Jones – 859.420.5016 or jgJones@uky.edu

BARCELONA

.....with **LSSC and OVSC**

March 10 – 12, 2022

Continue your time with a stay in one of Europe's most fascinating cities! While there are no planned tours, activities and tours can be arranged through the hotel or easily done on your own: the hotel is in a great location and Barcelona is easy to navigate on your own with suburb public transportation!

Price includes.....

- Private motorcoach from Andorra to Barcelona
- Bus transfer fro hotel to Barcelona airport
- 2 nights accommodations at the 4 star Avenida Palace Hotel
- Breakfast daily
- Local taxes

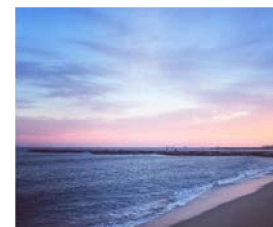
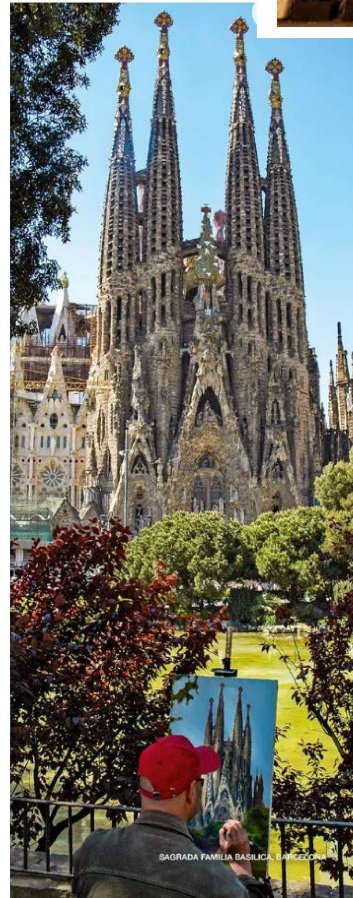
Barcelona is the capital city of the [autonomous community of Catalonia](#) in the [Kingdom of Spain](#), as well as the country's [second most populous municipality](#), with a population of 1.6 million within city limits.^[2] Its [urban area](#) extends beyond the administrative city limits with a population of around 4.7 million people,^[5] being the [sixth-most populous urban area](#) in the [European Union](#) after [Paris](#), [London](#), [Madrid](#), the [Ruhr area](#) and [Milan](#). It is the largest metropolis on the [Mediterranean Sea](#), located on the coast between the mouths of the rivers [Llobregat](#) and [Besòs](#), and bounded to the west by the [Serra de Collserola](#) mountain range, the tallest peak of which is 512 metres (1,680 [feet](#)) high.

Founded as a Roman city, in the Middle Ages Barcelona became the capital of the [County of Barcelona](#). After merging with the [Kingdom of Aragon](#), Barcelona continued to be an important city in the [Crown of Aragon](#) as an economic and administrative centre of this Crown and the capital of the [Principality of Catalonia](#). Barcelona has a rich cultural heritage and is today an important cultural centre and a major tourist destination. Particularly renowned are the architectural works of [Antoni Gaudí](#) and [Lluís Domènech i Montaner](#), which have been designated UNESCO [World Heritage Sites](#). The headquarters of the [Union for the Mediterranean](#) is located in Barcelona. The city is known for hosting the [1992 Summer Olympics](#) as well as world-class [conferences and expositions](#) and also many [international sport tournaments](#).

Barcelona is one of the world's leading tourist, economic, trade fair and cultural centres, and its influence in commerce, education, entertainment, media, fashion, science, and the arts all contribute to its status as one of the [world's major global cities](#). It is a major cultural and economic centre in [southwestern Europe](#), 24th in the world (before [Zürich](#), after [Frankfurt](#)) and a financial centre. In 2008 it was the [fourth most economically powerful city by GDP](#) in the European Union and 35th in the world. Now it is leading Spain in both [employment rate](#) and GDP per capita change. In 2009 the city was ranked Europe's third and one of the world's most successful as a city brand. In the same year the city was ranked Europe's fourth best city for business and fastest improving European city, with growth improved by 17% per year, and the city has been experiencing strong and renewed growth for the past three years. Since 2011 Barcelona has been a leading [smart city](#) in Europe Barcelona is a [transport hub](#), with the [Port of Barcelona](#) being one of Europe's principal seaports and busiest European passenger port, an international airport, [Barcelona–El Prat Airport](#), which handles over 40 million passengers per year, an [extensive motorway network](#), and a [high-speed rail](#) line with a link to France and the rest of Europe.

from Wikipedia

Included with Andorra - Can be added to Portugal -
check with trip leader Janet Graham Jones - 859.420.5016



Discover Portugal.....

- Arrive Lisbon, transfer to hotel, dinner included at the hotel.
- 2 nights in Lisbon.
Day 2 - Breakfast at the hotel, then all day private tour of Lisbon and the Estoril Coast, including Jerónimos Monastery, the National Palace of Sintra, and lunch.
Day 3 – Breakfast at the hotel, then departure to Evora, guided visit of Adegos da Cartuxa with wine tasting and lunch, includes visit to Cathedral and Bones' Chapel
- 1 night in M'Arde
Day 4 – Breakfast at the hotel, then departure north, full day private tour of Marvão and Castelo de Vide on the way to Marialva, lunch included
- 1 night in Marialva
Day 5 – Breakfast at the hotel, then departure to Douro Valley, visit to traditional estate winery with tasting and lunch.
- 1 night in Santa Cruz Douro Valley
Day 6 – Breakfast at the hotel, then departure to Porto, includes city tour with visits to the Stock Exchange Palace, the Sao Francisco Church, and lunch
- 2 nights in Porto.
Day 7 – Breakfast at the hotel, then visits to the Minho region, Guimaraes, Brago and Ponte de Lima, as well as the Dukes Palace of Guimaraes, the Brago Cathedral, and lunch
Day 8 – Breakfast at the hotel, then return south, seeing Caimbro and Obidos, touring the University of Caimbro and lunch
- 1 night in Obido
Day 9 – Breakfast at the hotel, then private transfer to Lisbon airport



PORTUGAL

..... with **LSSC and OVSC**
March 13 – 21, 2022

Continue your time in Europe with a great tour to all the most important and interesting parts of the country!



Price includes:

- Air from Barcelona to Lisbon.
- 2 nights in Lisbon.
- 1 night in M'Arde.
- 1 night in Marialva.
- 1 night in Santa Cruz Douro Valley
- 2 nights in Porto.
- 1 night in Obidos.
- Breakfast daily
- All Transfers with English speaking guides for daily day tours as outlined on the attached itinerary.
- Dinner the first night in Lisbon.
- 2 wine tastings with lunch.
- 4 additional lunches.



Pricing is only **\$2,825** (double occupancy) for all this! Remember that pricing is not final until ticketing, due to fluctuations in currency rates and airline surcharges/taxes, Transatlantic airfare not included.

PICNIC WITH THE POPS

AUGUST 14, 2021

KEENE MEADOW

REVOLUTION: The Music of The Beatles.

A Symphonic Experience.

A unique symphonic experience featuring six of the world's top vocalists and musicians, accompanied by The Lexington Philharmonic.

This promises to be a *wonderful* musical experience and is held outdoors! It will be a great time to see friends, enjoy good food and fantastic music!! As always, there will be a table decorating contest....some of us may still have some 1960's memorabilia?

The LSSC *sold out* all the seats at the reserved tables (seating 8 each) for this event and was unable to obtain additional tables. Members can still purchase general admission and join club friends for the concert.



TARA KEEGAN

Tarak828@hotmail.com

MEMBERSHIP



IT'S TIME TO JOIN OR RENEW YOUR MEMBERSHIP IN LSSC !!!

Remember: You must complete a membership application if you plan to go on a LSSC ski trip (except one day trips).

Join or renew an LSSC membership by visiting the LSSC website or attending the August 3 club meeting.

Dues are \$40.00 per year and may be paid online or by check (for *NEW* members fee will be credited against the cost this year of a qualifying LSSC trip).

Please be sure to ***sign the member waiver (on back)*** – it is ***required*** to process an application.



Completed applications can be returned to Cecile McKinney (membership chairperson) at the meeting or mailed to the club's P.O. Box (see website).



BOARD NOTES



The next board meeting is August 11, 2021 and will be held via video conference. Members may participate by notifying any board member in advance.

LSSC Officers and Directors 2021-2022

PRESIDENT - - CHARLIE LISLE president@lexskiSPORTS.org	MEMBERSHIP-CECILE MCKINNEY membership@lexskiSPORTS.org
PAST PRESIDENT/OVSC REPRESENTATIVE – JANET JONES ovsc-rep@lexskiSPORTS.org	WEB MASTER-DAVID MORRISON webmaster@lexskiSPORTS.org
SECRETARY- AGGIE WANINGER secretary@lexskiSPORTS.org	NEWSLETTER- ANNETTE RIEHLE newsletter@lexskiSPORTS.org
EXEC VP-HOWARD GLAUERT vp@lexskiSPORTS.org	RACING-DIANNA MILLER racing@lexskiSPORTS.org
TREASURER- CHARLIE LISLE treasurer@lexskiSPORTS.org	PRESIDENT-ELECT- - TOM O'DONNELL presidentelect@lexskiSPORTS.org
SOCIAL – TARA KEEGAN Tarak828@hotmail.com	Marketing & Publicity Director - OPEN
	LOCAL TRIP DIRECTOR- CHRIS PING localactivity@lexskiSPORTS.org



<https://www.facebook.com/LexSkiSPORTS/>

<https://www.facebook.com/groups/528526410566966/>



<http://www.ovsc.org>

LSSC website: www.lexskiSPORTS.org

LSSC Meetup:

<https://www.meetup.com/Lexington-Ski-and-SPORTS-Meetup/> ?



<http://skifederation.org>